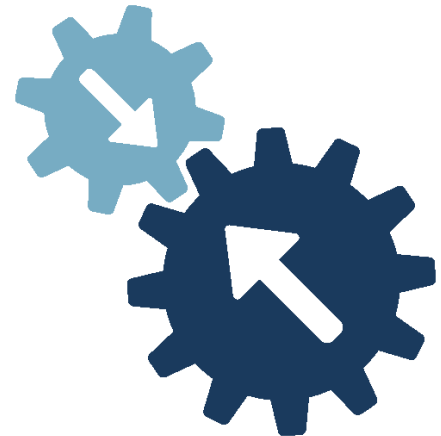


Microsoft Dynamics GP Application Integration



With CoreIntegrator, we seamlessly tie our best-in-class workflow and document management solution with your Dynamics GP installation. This means your team will work faster, save money, and you'll have better control over your entire procure-to-pay process.

The only thing you would lose is that filing cabinet and your frustrations! Contact the CoreIntegrator team today.



CoreIntegrator

CoreIntegrator is a comprehensive workflow solution that integrates business processes with documents and other electronic content. What does all of this mean for you?

What if we told you that we can help you automate some of your team's most tedious tasks and have data flow right into GP? Did you also know you can eliminate hunting down people for approvals or passing papers around for weeks, for just a mere glance? CoreIntegrator can help.

Not only will life be easier, you'll have safe storage for your documents and be able to track everything from beginning to end in a snap.

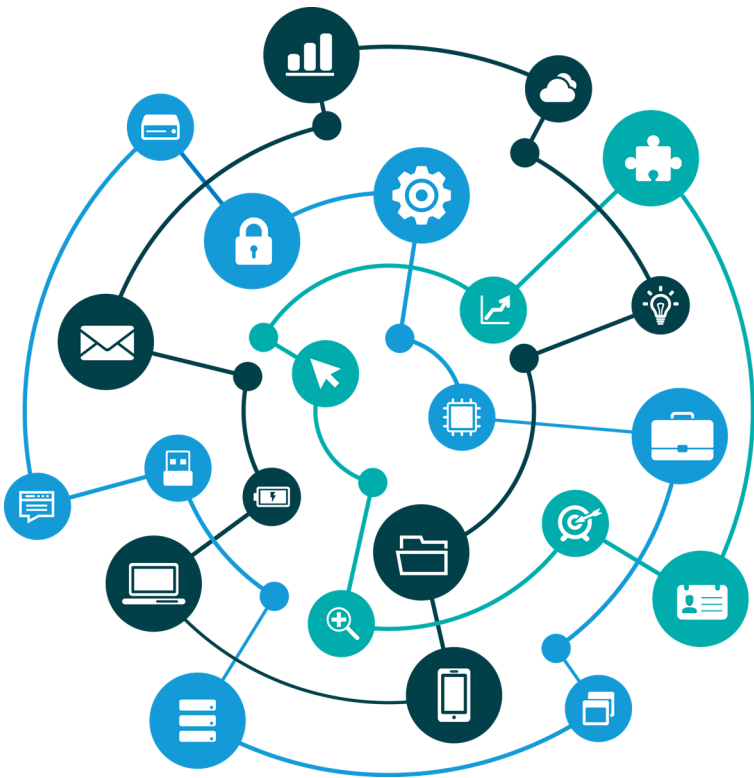
Seamless Integration

Did you ever wish you could shove your filing cabinet into Dynamics GP? Our CoreIntegrator desktop application will do the heavy lifting for you! You'll be able to handle office documents, PDF files, scanned images, emails, drawings and more with ease!

No matter where you are in the world of Dynamics GP, we can help you instantly retrieve and view your documents with a click of your mouse!

Things you'll like

- Attach documents directly from within Microsoft Dynamics GP
- Visual queue to the number of documents that are related to the active screen in GP
- The CoreIntegrator desktop application runs independently from GP requiring no screen modification
- Optional EMC Documentum integration
- Single-click access to related documents by transaction or query
- Custom indexing to attached documents
- Extendable to applications outside of Dynamics GP



GP Integration Points

- Accounts Receivable
- Bank Reconciliation
- Bill of Materials
- Fixed Assets
- General Ledger
- Human Resources
- Inventory
- Invoicing
- Payroll
- Purchasing
- Sales Order Processing